

BUILDING HAPPIER FUTURES



The John Lewis Partnership invites you to take part in our Building Happier Futures employment programme: an ongoing scheme to identify and recruit talented people who've experienced care to become Partners in our business.

We have developed a supported employment approach in partnership with local authorities and charities. Including a tour of one of our John Lewis, Waitrose, Warehouse or Hotel locations, work experience, and a guaranteed interview, this approach gives Care Experienced People an opportunity to truly explore the John Lewis Partnership and start a meaningful career.

Who we are looking for: Enthusiastic Care Experienced individuals looking to explore a career in our business, whether that be in our Retail shops, our Distribution warehouses or in our Hotels focusing on hospitality.

HOW IT WORKS

1

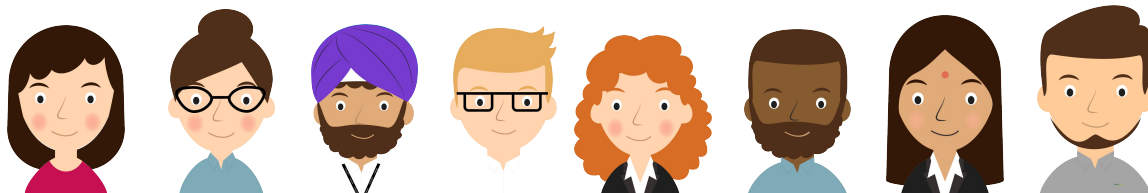
EMPLOYABILITY DROP IN & TOUR - Care Experience People are invited to attend an active location to find out more about the Partnership and our available roles, including a tour of the site.

2

WORK EXPERIENCE - Work experience is offered within the location so the Care Experience People can experience the reality of what it is like to work with us. In our shops, we offer 3 days of work experience, and in our Warehouse & Hotels we offer 5 days.

3

APPLICATION SUPPORT - Following work experience, if you are interested in applying for a position, and if the location has available vacancies, you will be invited to apply. If work experience has been completed, the interview is guaranteed.



If you have any questions contact:

WHEN

JUNE

JULY

AUGUST

EMPLOYABILITY DROP
INS & TOUR
Between 5th - 16th June

VACANCIES OPEN & APPLICATION SUPPORT
Between 3rd July - 11th August

WORK EXPERIENCE
Between 19th June - 14th July

START YOUR CAREER
*Start date dependant on
interview outcomes*

WHERE

JOHN LEWIS SHOPS

WAREHOUSE

HOTELS

Liverpool	Edinburgh	Glasgow
Nottingham	Cambridge	Newcastle
High Wycombe	Reading	Kingston
Welwyn	Milton Keynes	Cardiff
White City, London	Peter Jones, London	Cribbs Causeway
Bluewater	Southampton	

John Lewis Distribution: Magna Park 1 & 2, Milton Keynes
John Lewis Distribution: Fenny Lock, Milton Keynes
Waitrose Bracknell Distribution RG12 8YA

Odney Club Hotel, Cookham SL6 9SR
John Lewis Hotel: Ambleside Park, LA22 0EW
Leckford Abbas Stockbridge SO20 6JF

Whilst we rely on open vacancies which cannot be guaranteed in all proposed sites, we will make every effort to provide opportunities for care experienced individuals in their preferred area of our Retail business.

We will be running further Building Happier Futures employment programmes throughout 2023, and activating more of our locations up and down the country - watch this space!

We can't wait to introduce you to our Partnership